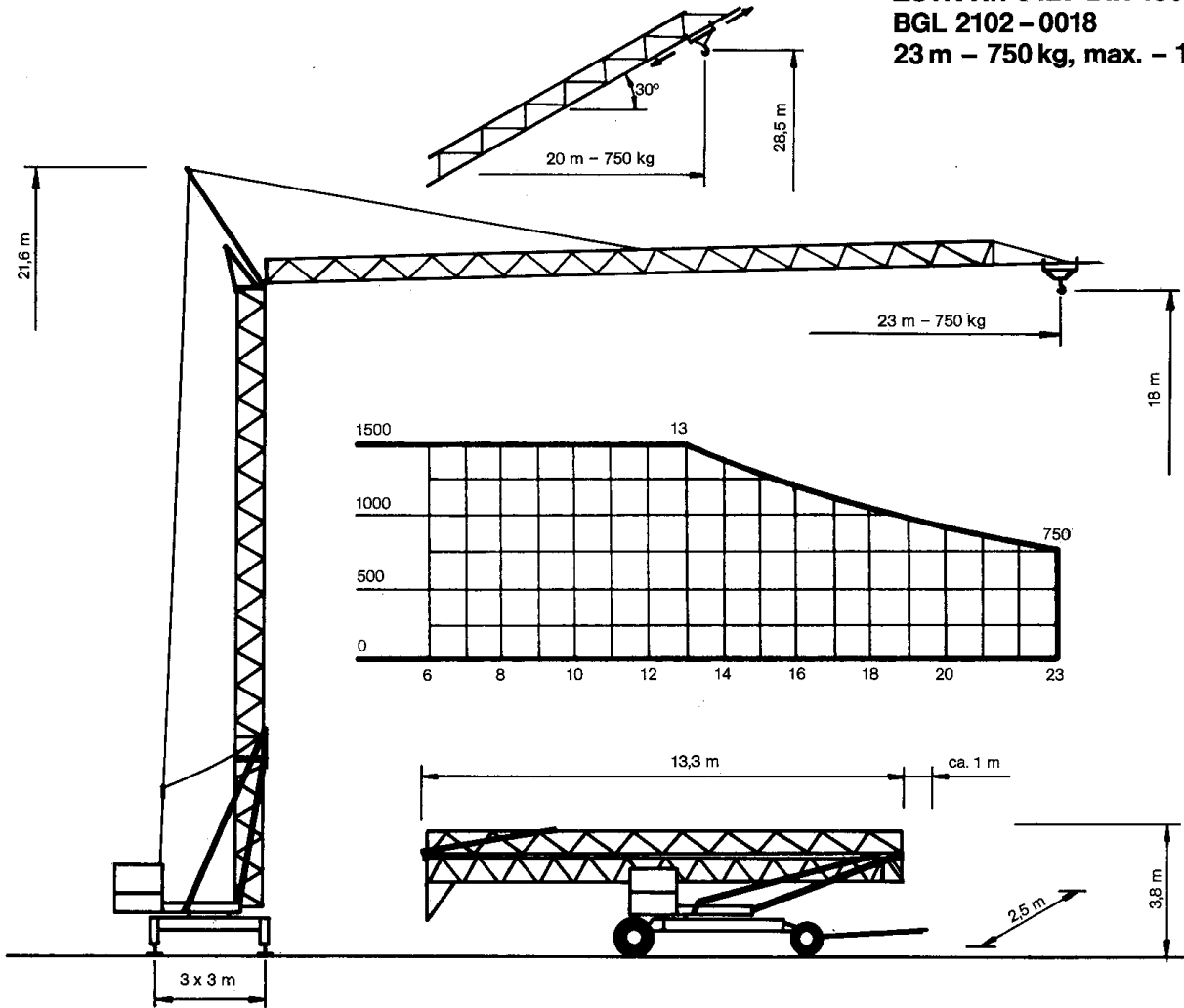
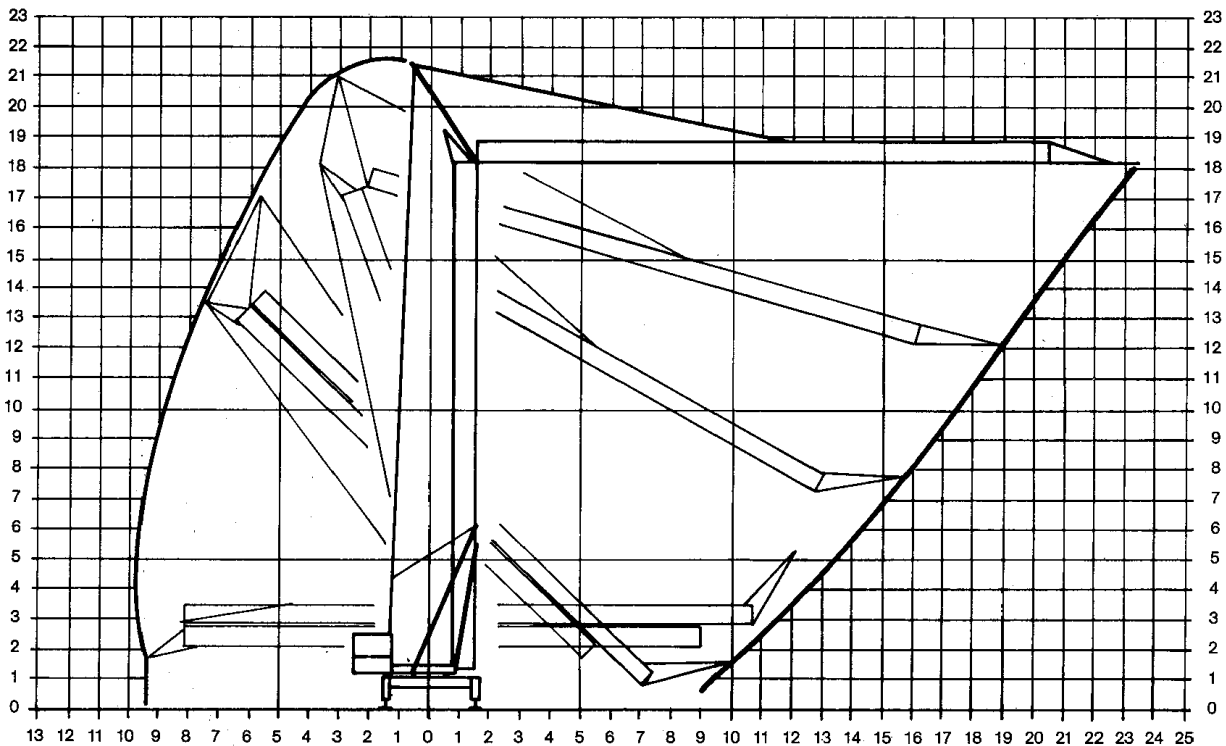


ZUTK Nr. 0427 DIN 15018
 BGL 2102 - 0018
 23 m - 750 kg, max. - 1500 kg












Montage - Platzbedarfsdiagramm
 Assembly - Space required diagram
 Montage - Surface utile



WOLFF 2010 SM

Leistungsdaten performance data details techniques	Ausladung (m) radius portée	Tragkraft (kg) lifting capacity capacité	Max. Tragkraft (kg) lifting capacity max. capacité max.
	23	750	1500

Geschwindigkeiten speeds vitesses	Heben lifting levage					
			m/min.	kg	m/min	kg
			45	750	-	-
			22	1500	-	-
			5	1500	-	-
	Katzfahren trolley drive / chariotage				m/min.	36
	Kranfahren traveling / translation				m/min.	30
Drehen (stufenlos) slewing / rotation				r. p. m.	0,9	

Allgemeine technische Daten

general technical data / details techniques generaux

Konstruktionsgewicht weight / poids de la grue	kg	6000	Ges. elektr. Leistung motor power / puissance totale	kW	10
Gegengewicht counterweight / contrepoids	kg	10000* (13000)	Kabelquerschnitt cable section / section du câble	380 V	4 x 6 ²
Max. Eckdruck max. wheel load / pression max.	kN	84	Kabeltrommel cable drum / enrouleur	m	54
Spurweite track gauge / ecartement	m	3,0	Schienenprofil rail profile / profile du rail		S18-S24
Radstand wheel gauge / voie	m	3,0			
Drehradius slewing radius / rayon de giration	m	2,6 (1,6)	* Gegengewicht CH counterweight CH / contrepoids CH 11700 kg		

Montage Assembly Montage

